

# *UniFirst* +

FIRST AID + SAFETY

Onsite services that always deliver





## CONTENTS

Safety training .....	3	Hand and surface sanitizers .....	21
AED and CPR training .....	4	Eye care.....	22
AED programs .....	5	Green Guard relief tablets .....	26
AED products .....	6	Medique OTC medications .....	28
Emergency and rescue .....	9	Consumer brand medications.....	29
First aid cabinets .....	10	Safety eyewear.....	30
Emergency kits .....	12	Lens cleaning .....	31
Vehicle first aid kit .....	13	Hand protection.....	32
Burn kits .....	13	Protective clothing.....	34
First aid instruments .....	14	Hearing protection.....	35
Infection control .....	15	Respiratory protection.....	36
Adhesive bandages .....	16	Ergonomic support.....	36
Bandages and dressings .....	17	Seasonal products.....	37
Applicators, tapes, and splints .....	18	Facility services .....	38
Cold and hot therapy .....	19	Industrial/Environmental safety.....	40
Burn care .....	19	Compliance and signage .....	42
Topical medications .....	20	Notes and Resources.....	43



# SAFETY TRAINING



## Instructor-Led Safety Training

Instructor-led safety training is interactive and provides opportunity for practice as employees are trained to help save lives, reduce injuries and accidents, and lower liability in the workplace. UniFirst First Aid + Safety's network of certified instructors provides expert, hands-on, instructor-led training at your facility.

## ENGAGING INSTRUCTORS

Safety training should be educational but also fun and engaging. Our experienced safety professionals consistently rank 5 stars amongst the nation's top safety trainers.

## DEDICATED SAFETY RESOURCE

Beyond training, we are your dedicated safety resource. We work with you for all your safety needs to help keep you and your team safe in the workplace.

## HANDS ON LEARNING

We train using real-life scenarios using the latest in technology and training materials to make training realistic and engaging to help your team be safe.

## EASY COMPLIANCE

We make your training easy to learn and easy to manage. Our dedicated team works with you every step of the process from scheduling to post-training follow up.

## COURSES:

- Bloodborne Pathogens (BBP)
- Confined Space Entry
- Construction Fall Protection
- CPR/AED/First Aid
- Eye Protection
- Fire Extinguisher & Fire Safety
- Forklift Safety
- Hazard Communication
- Lock Out/Tag Out
- Machine Guarding
- OSHA Compliance Training
- Personal Protective Equipment (PPE)
- Powered Industrial Truck Safety
- Respiratory Protection

Not available in all areas.

## Online Training

Online safety training is a convenient way to train your employees to help save lives, reduce injuries and accidents, and lower liability in the workplace. Online training saves time and money by taking less time away from an employee's workday. Online training allows employees the flexibility to access training when and where they have the time. Employees can pause, reread, or proceed through content at their own pace. Online training includes access to UniFirst First Aid + Safety LMS (Learning Management System).

## ENGAGING CONTENT

Using a powerful combination of audio, full-motion video, text, and colorful graphics, our online courses provide the most cost-effective safety and regulatory compliance training available today. Courses are divided into a number of logical sections so information is easily understood and retained.

## DVD COURSES

DVD courses combine up-to-date content filmed on-site in real workplace situations. DVDs are an easy way to train your employees to help save lives, reduce injuries and accidents in the workplace, and lower liability. A cost-effective solution for safety training with over 300 titles.

## OSHA 10 and OSHA 30

Online OSHA 10- and 30-hour training is available in both general industry and construction. This is the most efficient and easy-to-use means of obtaining your DOL/OSHA course completion card.

## HAZWOPER

Meet compliance needs with HAZWOPER 40-hour, 24-hour, and eight-hour refresher courses and receive a HAZWOPER Proof of Completion Certificate.

## ONLINE COURSES:

- Bloodborne Pathogens (BBP)
- Confined Space Entry
- Construction Fall Protection
- CPR/AED/First Aid
- Eye Protection
- Fire Extinguisher & Fire Safety
- Forklift Safety
- Hazard Communication
- Lock Out/Tag Out
- Machine Guarding
- OSHA Compliance Training
- Personal Protective Equipment (PPE)
- Powered Industrial Truck Safety
- Respiratory Protection

Plus over 150 additional titles.

# AED AND CPR TRAINING

**90% OF ALL OUT-OF-HOSPITAL CARDIAC ARRESTS (OHCA) ARE FATAL\***

Double a victim's chance of survival with effective bystander CPR and defibrillation provided immediately after cardiac arrest.



UniFirst First Aid + Safety is proud to offer AHA (American Heart Association) Heartsaver and Basic Life Support (BLS) courses. The AHA provides the highest-quality training materials, courses, and programs in CPR first aid for healthcare professionals, first responders, employees, and the general public.

## Two Easy and Convenient Ways to Teach Your Team CPR



**On-site Training** – Want a more traditional interactive on-site session? This classroom-style training is a great solution for traditional-style “group” trainings. Our instructors and content always get high praise. We can come to your facility.



**Blended Learning** – Minimize downtime for your team. Students take an online course. When successfully completed, an instructor will evaluate the student's skill with a “skills test”. Students learn anywhere, on any device, on their schedule.

## CPR COURSE TOPICS

### First Aid Basics

Recognizing the problem, assessing the scene, personal protective safety, Good Samaritan laws, and universal precautions

### Medical Emergencies

Breathing difficulty, shortness of breath, severe allergic reaction, heart attack, fainting, diabetes/low blood sugar, stroke, and seizure

### Injury Emergencies

External/internal bleeding, wounds, head/neck/spinal injuries, broken bones/sprains, burns, and electrical injuries

### Environmental Emergencies

Bites and stings, heat- and cold-related emergencies, and poison emergencies

### Adult and Child/Infant CPR and AED Training

CPR and AED training, choking, and opioid-drug-related emergencies

*\*American Heart Association's (AHA) Heart Disease and Stroke Statistics 2020.*



# AED PROGRAMS

## WHAT IS AED PROGRAM MANAGEMENT?

To rescue a victim of cardiac arrest, you need an AED (automated external defibrillator) that is ready to deliver a lifesaving shock. But just having an AED is not good enough. To save a life, you have to make sure your AED is working and will be in the hands of a trained volunteer responder.

If that sounds simple, you may not realize all you need to know and do to set up and maintain a successful AED program.

### Automate Your Program

The best solution for high-quality AED program management is simple: Let PlusTrac™ guide you through setup, and then let us do the worrying. Take action only when you are alerted that it is needed. PlusTrac can be your guarantee that your AED will always be ready, compliant, and supported.

PlusTrac is an AED program management service with an online software solution and mobile app that provides everything you need to effectively manage your AED.

Professional AED program solution includes PlusTrac online management program for a single (1) AED, complete client implementation support, EMS registration and agency filings, as well as legislative and regulatory support. A dedicated account manager will work directly with you to establish an effective program and to help ensure compliance. Medical direction and prescription are included.



### ARE YOUR AEDs READY AND COMPLIANT?

Here are some important questions for anyone managing AEDs:

- Are you certain every one of your AEDs is ready and will work in an emergency?
- Do you know the current self-test status of every AED in your program?
- Are you checking AED statuses regularly?
- Do you know when to replace the pads and batteries for each of your AEDs?
- Are you tracking the responders assigned to your AEDs?
- Who will you call in order to train your responders in using AEDs and CPR?
- Do you know when your responders will need re-training to maintain their rescue skills?
- Can you quickly and accurately review the current status of all your AEDs and trained responders?

Having trouble answering these questions? PlusTrac is the answer.

### PLUSTRAC™ LICENSE SUBSCRIPTIONS

**3256** One-Year License

**3258** Five-Year License

## AED PRODUCTS

### EARLY CPR AND DEFIBRILLATION SAVES LIVES

**Sudden Cardiac Arrest (SCA)** is not a heart attack. It is a condition where the heart abruptly and unexpectedly ceases to function. SCA is an “electrical problem” caused by Ventricular Fibrillation, a heart rhythm disorder. In SCA, the heart is no longer able to pump blood to the rest of the body.

#### ZOLL AED PLUS®

Approximately 50% of sudden cardiac arrest (SCA) cases initially require a shock. All rescues require high-quality CPR. ZOLL's patented Real CPR Help® provides rescuers with integrated, real-time CPR feedback on depth and rate of compressions for high-quality CPR. In addition to Real CPR Help, the AED Plus offers:

- CPR-D•padz™, a one-piece, pre-connected pair of electrodes with Real CPR Help
- Intelligent Pediatric Capability: when connected, the AED Plus recognizes that a pediatric rescue is in progress.
- Voice and text prompts to guide rescuers
- Seven-year device warranty option
- Weekly and monthly self-tests by default or customize as often as daily
- IP55 rating for protection against dust and water
- ZOLL's Rectilinear Biphasic Waveform

#### ZOLL AED PLUS

- 3251** Semi-Automatic
- 3264** Fully-Automatic
- 3254** ZOLL CPR-D•padz
- One-piece, pre-connected pair of electrodes with Real CPR Help.
- 3253** ZOLL pedi•padz® II
- When connected, the AED Plus recognizes that a pediatric rescue is in progress.
- 3252** ZOLL Lithium Batteries
- 3257** AED PLUS Black Carry Bag
- PWS-100** AED 3D Wall Sign



#### AED CABINET

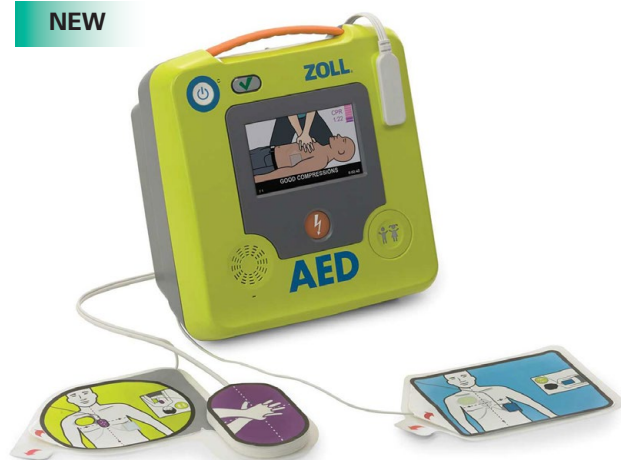
- 3255** Standard Metal Wall Cabinet with Alarm



**ZOLL**



NEW



### ZOLL AED 3®

- Enhanced Real CPR Help technology provides real-time CPR feedback on the rate and depth of chest compressions
- Text and voice prompts provide visual and audible feedback to the rescuer on CPR quality
- High-resolution LCD touchscreen display with vivid rescue images provides visual guidance to responders
- A CPR cycle timer and a large color bar gauge show CPR compression depth
- Universal one-piece CPR Uni-padz electrodes feature a 5-year shelf life
- RapidShock analysis technology minimizes pre-shock pause time
- Built-in WiFi connectivity can automatically report device readiness and offer fast access to clinical event data, including CPR performance data
- Integrated pediatric rescue: CPR Uni-padz and child-mode selection softkey offers one solution to treat both adults and children
- Built to withstand extreme temperatures and altitude, vibration, and shock
- Optional WiFi connectivity can automatically report device readiness and offer fast access to clinical event data, including CPR performance data
- Rugged design features an IP (ingress protection) rating of IP55 for dust and water
- 5-year smart battery can report its power status
- Post-event support via RescueNet® Event Summary
- Comprehensive automatic self-tests ensure device readiness
- Semi-automatic and fully automatic configuration
- Export clinical data, update device software, or clone/upload configuration through the USB port

**3270**  
**3270FA**

Semi-Automatic  
Fully-Automatic

**8900-000280-01**  
**8000-000696**

CPR Uni-padz  
AED 3 Battery Pack

NEW

### ZOLL POWERHEART G5®

- ICPR technology provides real-time, guideline-driven CPR feedback on the quality of chest compressions
- RescueCoach prompts advance upon completion of each rescue task
- Dual-language function enables users to toggle between preset primary and secondary languages with a touch of a button
- Fully automatic G5 unit will deliver a shock automatically when it detects a shockable heart rhythm
- AED stores 90 minutes of rescue data, accessible by USB cable or USB memory stick
- IP (ingress protection) rating of IP55 for dust and water
- Rugged design withstands conditions like extreme temperature, high altitudes, and vibration
- Non-polarized Intellisense™ defibrillation pads offer a 2-year shelf life
- Intellisense® Lithium battery offers a 4-year shelf life
- Pediatric capability with Intellisense™ pediatric defibrillation pads (recommended for patients 8 years of age or younger or weighing less than 55 pounds (25kg))
- Rescue Ready® indicator shows readiness status of battery, pads, and device
- Soft carry case for easy travel

**G5S-80C-S**  
**G5A-80C-S**

Semi-Automatic  
Fully-Automatic

**XELAED002B**  
**XELAED003C**  
**XBTAED001A**

G5 Intellisense adult pads  
G5 Intellisense pediatric pads  
G5 Intellisense Battery



## AED PRODUCTS

### HEARTSINE® AED

Designed specifically for the lay responder, HeartSine Samaritan® AEDs offer industry-leading value and environmental protection, all in an easy-to-operate system in the smallest and lightest package available. Features an eight-year warranty.

- Biphasic waveform with impedance compensating escalating energy 150/150/200J
- CPR coaching with metronome\*
- Integrated electrode and battery options: Pad-Pak™, Pediatric-Pak™, and TSO-Certified Pad-Pak
- Included accessories: Pad-Pak battery/electrode cartridge, carrying case

HEARTSINE SAMARITAN PAD 350P AED

**80514000263** Semi-Automatic

HEARTSINE SAMARITAN PAD 360P AED

**80514000309** Fully-Automatic

HEARTSINE SAMARITAN PAD 450P AED

**80514-000002** Semi-Automatic \* 450P features real-time verbal and visual CPR rate feedback.

**PADPAK01** HeartSine Samaritan PAD Adult Pad-Pak™

**PADPAK02** HeartSine Samaritan PAD Pediatric-Pak™

350P



### PHILIPS HEARTSTART FRx

The HeartStart FRx AED from Philips is a state-of-the-art defibrillator that comes with an eight-year manufacturer's warranty. This unique model is the only one on the market with an optional infant/child key, which you can use with adult pads for pediatric patients. This model is both lightweight and rugged, designed to be durable without slowing you down.

- Semi-automatic AED
- Effective high-current/low-energy therapy
- 500 lb. crush test rating/one meter drop
- Rugged design, IP rating 55 (dust and water)
- Metal and wet surface designation
- 200 shocks/four-hour operating time

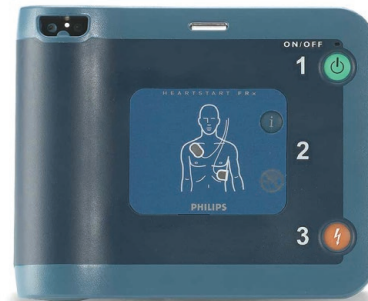
HEARTSTART FRx AED

**861304C01** With standard case

**989803139261** HeartStart FRx Adult SMART Pads

**989803139311** HeartStart FRx Infant/Child Key

**M5070A** HeartStart FRx Battery



PHILIPS

### PHILIPS HEARTSTART ONSITE

The first and only AED available without a prescription (unless for Peds pads), the OnSite is designed to be the easiest to set up and use and the most reliable defibrillator available. Using clear, calm voice instructions, it guides you through each step of defibrillation, including CPR coaching. Eight-year warranty.

- Semi-automatic AED
- Effective high-current/low-energy therapy
- Adult and pediatric defibrillation with separate SMART pads
- Indoor design, IP rating 21 (dust and water)
- Proven ease of use for lay responder
- 200 shocks/four-hour operating time

HEARTSTART ONSITE AED

**M5066ACC** With standard case

**M5066AC02** With slim case

**M5066A-C03** With waterproof case

**M5071A** HeartStart OnSite Adult SMART Pads HS1

**M5072A** HeartStart OnSite Infant/Child SMART Pads

**M5070A** HeartStart OnSite Battery





## EMERGENCY AND RESCUE

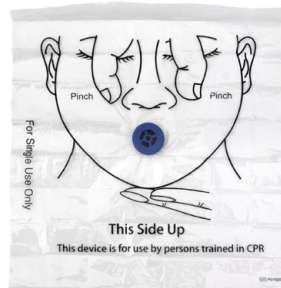
UniFirst First Aid + Safety CPR barriers offer first responders protection from bodily fluids. Barriers are available in a variety of portable options.



### CPR EMERGENCY KIT

Plastic case attaches to kits and walls. Contains one pair nitrile gloves, one CPR barrier mask, and one antimicrobial towelette.

**8070**



### CPR MASK BARRIER

**80201**



### CPR MICROKEY

With key ring.

**U8065**

### EMERGENCY TRANSPORT EQUIPMENT (not shown)

UniFirst offers a variety of transport equipment to aid in safely moving victims without causing further injury.

#### POLE STRETCHER

**8511** Break-apart with case

#### FOLDING STRETCHER

**8513** With wheels

#### BASKET STRETCHER

**8515** With leg divider

#### FOLDING COT

**8514**

#### BACKBOARD

**8519** With runners

#### BACKBOARD

**8520** With head immobilizer

#### FIRE BLANKET

**8523** With case

#### RESCUE BLANKET

**8522** Disposable

#### ALUMINIZED SPACE BLANKET

**8524**

# FIRST AID CABINETS

## MEETING YOUR REQUIREMENTS, MEETING OSHA REGULATIONS

At the heart of every company's emergency plan, there should be a properly stocked first aid cabinet. UniFirst First Aid + Safety cabinets are built tough on the outside of durable steel for years of service. Yet inside, the contents are sensitive to the needs and distress of your employees. Treat your employees' discomforts with quality products for:

- Trauma
- Minor cuts and abrasions
- Serious Bleeding Emergencies
- Personal discomforts
- Burns (thermal or chemical)
- Eye irritation

Our cabinets are available in a wide variety of sizes and content selections to match your company requirements.

### ANSI STANDARD Z308.1-2021

OSHA refers to the ANSI standard as an example of minimal contents for first aid kits. "ANSI Z308.1-2021" indicates the kits that meet the new ANSI standard when properly maintained.

### NEW

#### THREE-SHELF CABINET

MEETS ANSI Z308.1-2021 Class B

An ideal cabinet for small businesses, shipping and receiving departments, or other remote locations of your facility. Convenient door pouches and a wide assortment of product will give you confidence in your ability to handle emergencies.

**1150** 16"H x 13.5"W x 5.5"D



### NEW

#### FOUR-SHELF CABINET

MEETS ANSI Z308.1-2021 Class B

A standard in the industry for over 30 years, this cabinet contains an assortment of adhesive bandages, dressings, eye care products, antiseptics, employee comfort items, and much more to meet those day-to-day mishaps at work. Convenient door pouches allow for storage of smaller items.

**1155** 21.8"H x 14.9"W x 5.5"D





## ANSI Z308.1-2021 CLASS B KITS

Class B kits are intended to provide a broader range and quantity of supplies to deal with injuries encountered in more populated, complex, and/or high-risk workplace environments. Most recent additions to the Standard include an arterial tourniquet, silver rescue blanket and hand sanitizer.

### NEW

#### FOUR-SHELF WIDE CABINET

MEETS ANSI Z308.1-2021 Class B

25% more space than a regular four-shelf cabinet. Provides the same selection and variety of first aid items as the five-shelf cabinet with a smaller overall footprint.

**1158** 22.3"H x 19.3"W x 5.4"D



### NEW

#### FIVE-SHELF CABINET

MEETS ANSI Z308.1-2021 Class B

This five-shelf cabinet provides the largest selection and variety of first aid products to meet the everyday treatment of accidents and injury.

**1180** 27.4"H x 19"W x 6.5"D



# EMERGENCY KITS

## JUST GRAB AND GO

An ideal addition to your first aid cabinets, these kits are designed to be your first line of defense when serious accidents and emergencies arise. Our emergency kits give you portability to injuries upstairs, downstairs, in the parking lot, at the loading dock, or wherever you need to go.



### FIRST RESPONDER KIT

MEETS ANSI Z308.1-2021 Class B

Contains everything you need for quick response to accidents and injuries on the job. Included are saline solution, bandages and dressings, tapes, trauma compresses, and more.

**1190**

### FANNY PACK

MEETS ANSI Z308.1-2021 Class A

Everything you need for minor first aid emergencies in our most portable pack. Features an adjustable strap to fit around the waist.

**1194**



### TRAUMA KITS

Designed to be the first line of defense in an emergency situation. Trauma kits are made of high-impact plastic that's lightweight and extremely durable. Contains a wide variety of products to meet emergency needs.

DELUXE KIT

**1196**

STANDARD KIT

**1195**



### OSHA REGULATION CFR 1910.151(b)

In the absence of an infirmary, clinic, or hospital in near proximity to the workplace, which is used for the treatment of all injured employees, a person or persons shall be adequately trained to render first aid. Adequate first aid supplies shall be readily available.



## VEHICLE FIRST AID KITS

There's a UniFirst first aid kit that is perfect for your needs. Whether you have a large fleet or a single truck, our kits provide on-the-spot help. Each kit can be mounted in a vehicle for safety and is water and dust resistant.

### NEW

#### SUPER UTILITY KIT

MEETS ANSI Z308.1-2021 Class B

Excellent for large over-the-road trucks or for your small business. Versatile and functional, you'll find a variety of products for your comfort and assurance.

**1125** 14.9"W x 10"H x 4.6"D



#### DELUXE VEHICLE KIT

Ideal for your superintendent or foreman's truck or van. Easily mounts or fits behind or under a seat. Tough durable steel protects contents.

**1105** 13.7"W x 9.1"H x 2.4"D



#### MEDIUM VEHICLE KIT

Great for company delivery trucks, church vans, or even SUVs. Don't leave work without it.

**1142** 9.1"W x 6.4"H x 2.4"D



#### SMALL VEHICLE KIT

**1135** 7.5"W x 4.6"H x 2.4"D

#### ECONOMY TRUCK KIT, PLASTIC

(not shown)

**1133** 7.7"W x 4.6"H x 2.4"D

## BURN KITS

Burn victims want treatment that cools the burn, relieves the pain, and protects against contamination. They also want treatments and dressings that won't stick to the wound and can be easily removed or rinsed away.



#### BURN KITS

Our custom burn kits offer just what you need to treat burn victims. Quick and complete care.

##### DELUXE KIT

**1198**

##### SMALL KIT

**1197**



## FIRST AID INSTRUMENTS

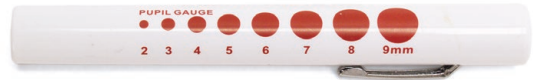
First responders need the best tools for any first aid emergency. We carry a variety of quality instruments to cover all of your needs.



### BANDAGE SCISSORS

Stainless steel bandage scissors with clip.

**71101** 5.5"



### PENLIGHT

Penlight with convenient pupil gauge on side.

**8212I**



### TWEEZERS

Individually wrapped plastic disposable tweezers.

**8203**



### FORCEPS

Stainless steel fine-point tweezers.

**8207** 5"



### PARAMEDIC SHEARS

Multi-purpose for cutting through leather, plastic, or fabric.

**70901-BK**



### SCISSORS, KIT TYPE

Stainless steel kit scissors ideal for cutting bandages quickly and efficiently.

**8205** 4.5"



### SPLINTER TWEEZER WITH MAGNIFIER

Stainless steel tweezers featuring glass lens with 4x magnification.

**72101**



### EYE MAGNET WITH LOOP AND CASE

Remove metallic and non-metallic objects from the eye with minimal intrusion.

**71701**



### SPLINTER REMOVER

Individually wrapped sterile single use stainless steel splinter removers.

**8230** 10 splinter removers/pack

When assessing first aid situations, it's important to have all the triage items necessary to properly evaluate the victim's needs.



#### BLOOD PRESSURE UNIT

Adult. Case included.

**8213**



#### STETHOSCOPE

Latex free. Delivers optimum acoustics.

**8215**



#### DIGITAL THERMOMETER

Oral. Case included.

**8217**



#### FEVERSCAN®

Forehead thermometer.

**79233B**

## INFECTION CONTROL

Protecting the health of your first responders is easy when you have the right products on hand.



#### BODILY FLUID CLEAN UP KIT

Portable plastic kit containing a variety of products for personal protection when cleaning up bodily fluid . Kit includes: gloves, antimicrobial wipes, absorbent powder, biohazard bags and ties, mask with face shield, disinfectant, apron, plastic goggles, scoop, and scraper.

**2803T**



#### BODILY FLUID DISPOSAL KIT

A complete variety of products for personal protection, clean up, and disposal when dealing with biohazard incidents. Kit includes: gloves, antimicrobial wipes, absorbent powder, biohazard bags and ties, mask with face shield, disinfectant, apron, shoe covers, disposable towels, scoop, and scraper.

**1216**

#### RED BIOHAZARD/ INFECTIOUS WASTE BAGS

Sold individually.

**6615**



#### SANI-SAFE GLOVE DISPENSER

Latex-free  
nitrile gloves.

**7915**





## ADHESIVE BANDAGES

Durable cloth bandages to meet the demands of the most vigorous work. Our bandages stay on even when in contact with water or grease and are latex-free. Flexible for comfort and for difficult-to-bandage areas. The non-stick pad and ventilation promote natural healing.



### 7/8" x 3" FABRIC STRIPS

**6300** 50/box  
**6301** 1000/box

### KNUCKLE BANDAGES

**6304** 40/box  
**6305** 1000/box

### FINGERTIP BANDAGES

**6302** 40/box  
**6303** 1000/box

### LARGE PATCH BANDAGES

**6306** 25/box  
**6307** 1000/box

### LARGE FINGERTIP BANDAGES

**6308** 25/box  
**6309** 1000/box

### 7/8" x 1 1/2" SMALL STRIPS

**6310** 50/box  
**6316** 1000/box



### EXTRA LONG FABRIC STRIPS 3/4" x 4 11/16"

**6312** 40/box



### PLASTIC 1" x 3" ADHESIVE STRIPS

**6314** 60/box



### BUTTERFLY CLOSURES, MEDIUM

**6397** 10/box



### LATEX FINGER COTS

**6263** 50/vial  
**6262** 144/box

## RESTAURANT AND FOOD SERVICE BANDAGES

These special blue bandages are designed for high visibility. Flexible fabric material stays on even in water. Since there are no blue foods, these bandages can easily be seen if they come off in food prep or manufacturing. All of our blue bandages are also metal detectable.

### BLUE METAL KNUCKLE

**6304BMD** 40/box

### BLUE METAL FABRIC STRIPS

**6300BMD** 50/box

### BLUE METAL LARGE FINGERTIP

**6308BMD** 25/box

### BLUE METAL PLASTIC STRIPS

**6314BMD** 60/box (not shown)



## BANDAGES AND DRESSINGS

We offer an assortment of wraps, wound dressings, and gauze products for many different first aid applications, from minor wound treatment to compresses for major trauma.



### RIP-N-WRAP

Self-adherent bandage.

- 6101** 1" x 5 yds
- 6102** 2" x 5 yds
- 6103** 3" x 5 yds
- 6104** 4" x 5 yds



### ELASTIC BANDAGE

With clips.

- 6232** 2" (not shown)
- 6233** 3"
- 6234** 4"



### COMBINE PADS

- 6213** 5" x 9"



### STERILE GAUZE PADS

- 6201** 2" x 2", 10/box
- 6202** 2" x 2", 25/box
- 6204** 2" x 2", 100/box (not shown)
- 6205** 3" x 3", 10/box
- 6206** 3" x 3", 25/box
- 6211** 4" x 4", 10/box (not shown)



### TRIANGULAR BANDAGE

- 6400** Non-sterile, boxed



### LARGE TRAUMA DRESSING

- 6520**



### ROLLER GAUZE BANDAGE

- 6112** 2" x 4.5 yds
- 6113** 3" x 4.5 yds
- 6114** 4" x 4.5 yds



### BLOODSTOPPER COMPRESS

- 6525** 5" x 9"



### NON-STICK PADS

- 6215** 2" x 3", 15/box

## APPLICATORS, TAPES, AND SPLINTS

No first aid department is complete without the supplies necessary to apply topical medications, hold dressings in place, or provide support to minor injuries. We carry the items necessary to keep you stocked up.



### COTTON-TIP APPLICATORS

**6603** 3", 100/vial  
**6604** 3", 1000/box (not shown)



### TONGUE DEPRESSORS

**6613** 500/box



### COTTON BALLS

Sterile and absorbent.

**20131** 100/bag  
**20122** 200/bag



### SAFE WRAP

Self-adhering protective tape/wrap.

**6259G** 1" x 10 yds, 12/pkg.



### ELASTIC TAPE

**6249** 1" x 5 yds



### FINGER SPLINTS

**6247A** Assorted sizes.



### WATERPROOF ADHESIVE TAPE

Spools with covers to help keep the tape clean.

**6253** .5" x 5 yds  
**6254** 1" x 5 yds  
**6248** 2" x 5 yds, tri-cut



## COLD AND HOT THERAPY

We offer products to treat a variety of mild sprains, bruises, muscle strains, arthritis, and more with hot and cold packs and Biofreeze® topical pain relieving gel.

### INSTANT COLD PACKS

- 3300** Large, boxed
- 3301** Large, bulk 24/case
- 3302** Medium, boxed
- 3302B** Medium, bulk, 48/case



### HOT/COLD PACK

Reusable (not shown)

**3304**



### BIOFREEZE®

Pain relieving gel.

**3111** 5 gm packets

## BURN CARE

From burn spray and gels for topical relief to dressings that stop the progression of burns while cooling the skin and relieving pain and protecting against contamination, we offer a variety of burn care options.

### WATER JEL®

- 3160** Dressing 4" x 4"
- 3161** Dressing 4" x 16"
- 3166** Gel, .125 oz. pkts., 25/box



### BURN SPRAY

**3011** 2 oz. pump bottle



### COOL JEL COOLING GEL

**3006** 4oz. bottle



### DERMA-CAINE BURN CREAM

- 3106** 25/box
- 3107** 144/bag

## TOPICAL MEDICATIONS

From towelettes to clean the skin to sprays, creams, and ointments to clean or disinfect minor cuts, scrapes, and burns, we have the topical medications your first aid program needs.



### ALCOHOL WIPES

Individual towelettes saturated with 70% isopropyl alcohol.

**3015** 50/box

### IODINE SWABS (not shown)

**6516** 10/box



### ANTISEPTIC TOWELETTES (BZK)

Individual towelettes saturated with 1:750 benzalkonium chloride solution.

**3025** 25/box  
**3026** 100/box



### ANTISEPTIC SPRAY

Pump spray antiseptic for minor wounds.

**3001** 2 oz. pump bottle



### COLD SPRAY

Topical coolant used to cool the skin and reduce swelling and pain.

**3005** 4 oz. aerosol can



### SUPER STAT BLOOD CLOTTER SPRAY

Helps stop superficial bleeding on contact.

**3003** 3 oz. aerosol can



### ISOPROPYL ALCOHOL SPRAY

Topical skin cleaner in a convenient pump spray.

**3018** 4 oz. pump bottle



### HYDROGEN PEROXIDE SPRAY

Local antiseptic to treat minor cuts and abrasions.

**3004** 4 oz. pump bottle



### ANTIBACTERIAL WOUND WASH

Cleans wounds painlessly and effectively.

**24506** 4 oz. eco-friendly spray can



### BANDAGE SPRAY

Provides a protective coating for minor burns, cuts, and insect bites.

**45017** 3 oz. aerosol can



### 1% HYDROCORTISONE CREAM

Provides temporary relief from minor skin irritations, itching, and rashes.

**3103** 25/box  
**3104** 144/bag



### TRIPLE ANTIBIOTIC OINTMENT

Effective protection against infection for minor cuts, burns, and abrasions.

**3101** 25/box  
**3100** 144/bag



### QUICK RELIEF WOUNDSEAL® POWDER

Used by leading hospitals, sports teams, and in development by EMTs and the U.S. Military, Quick Relief WoundSeal® powder stops bleeding in seconds and forms a protective seal allowing nothing into or out of the wound.

**2333** For hard-to-reach wounds (head, face, nose). Two applications.  
**2332** For easy-to-reach wounds (arms, hands, legs). Two applications.  
**2330** Rapid response (for larger wounds). One single-use bottle.



### LIP-GUARD

All natural ingredients that soothe and hydrate dry, chapped lips.

**26671** 20 pkts/box



### SAFETEC LOTION

Concentrated formula for chapped, itchy, and dry skin.

**3112** 1gm, 144/bag  
**3111B** 1gm, sold individually

## HAND AND SURFACE SANITIZERS

Help prevent the spread of bacteria with products designed to kill germs on skin and hard surfaces.



### ANTIMICROBIAL TOWELETTES

**3035** 100/box



### GERM-X HAND SANITIZER

Moursturizing hand sanitizer.

**20902** 2oz Bottle  
**20908** 8oz Bottle



### SANIZIDE PRO®

Germicidal cloth.

**3045** each  
**35826** 50/box



### SANI-CLOTH PLUS

Germicidal cloth.

**10342** 160/canister

### SANI-CLOTH BRACKET

**10342WB**

### HAND SANITIZER

**51173** 25/box  
**17312** 10/count





## EYE CARE

We offer a variety of eyewash products to suit your facility. Wall-mounted or table-top eye wash stations ensure your employees can be treated in an efficient manner to minimize injury.

### NEW

#### EMERGENCY EYEWASH STATION

- Delivers at least 15 minutes of non injurious flow to meet the ANSI Z358.1 standard
- One-step activation for near instantaneous flow
- Manifold and base work together to capture wastewater and drain into disposal bin or cart
- MIN to MAX lines on manifold help ensure proper water level
- Front-facing opening to easily add water and preservative
- Gravity-fed station can be wall mounted, used with a stand or placed on a table/cart
- Includes a wall bracket, potable water preservative, test log card and drainage hose
- Uses Eyewash Additive 4101 — see page 23

**REW01112** 12 Gallon Eyewash Station



*Delivers at least 15 minutes of non-injurious flow to meet the ANSI Z358.1 Standard*

**NEW**



### EMERGENCY EYEWASH STATION ALARM

The optional alarm system mounts easily onto REW01112 and adds another level of safety to the emergency eyewash station. When the station is activated, the alarm automatically alerts nearby workers that help is needed with a siren and flashing light.

**REWALARM**

\*Batteries not included



### EYEWASH ADDITIVE

Mix with clean, potable water (10:1 ratio). One bottle (8 oz.) suitable for 14–16 gallons. 30-month shelf life (unopened).

**4101** 8oz bottle

### OSHA REGULATION CFR 1910.151(C)

Where the eyes or body of any person may be exposed to injurious corrosive materials, suitable facilities for quick drenching or flushing of the eyes and body shall be provided within the work area for immediate emergency use.

**NEW**

### EYEWASH STATION DRAIN CART

- Strong plastic construction with 16 gallon capacity
- Small drain hose opening in top to collect water
- Screw-on cap to cover drain hose opening when rolling filled cart
- Ergonomic design for easy pushing or pulling to disposal area
- Molded wheels and steel axle for stability and durability on range of surfaces

**REWCART**



**NEW**

### EYEWASH STATION STAND

- Ensures station is at ANSI-required height for operation
- Simple six-bolt assembly with included hardware
- Can be used in and easily moved to varied locations
- Durable powder-coated steel construction
- Open base for wastewater disposal cart or container
- Rubber feet for stability

**REWSTAND**

Compatible with 12 Gallon Eyewash station



**NEW**

### EYEWASH STATION DUST COVER

- Protects 12 gallon eyewash station from dust and environmental contaminants
- Maintains useability with hook and loop closure that releases with activation of tray

**REWCOVER12**



## EYE CARE

Our portable eye and skin solutions allow you to keep buffered, sterile eyewash on hand wherever it may be needed to provide immediate care until emergency care can be rendered.

### EYE AND SKIN STATION

This portable unit contains a flush bottle with cup as well as two 16 oz. bottles of eye and skin solution. Included are eye pads and tape, and an eye magnet with loop to aid in the removal of foreign particles. Wall mounted or portable.

**4125**



### REFRESH PLUS®

Lubricant eyedrops provide soothing dry-eye relief that works.

**23672** 30/box  
**23672P** 5/pack



### EYEWASH SOLUTIONS

Single use, buffered, isotonic saline.

- 4110P** Four 1 oz. bottles
- 4105** 4 oz. bottle
- 4106** 8 oz. bottle
- 4107** 16 oz. bottle



### EYE CUPS

**4150** 6/vial



### SINGLE WALL STATION

Provide immediate flushing until the injured person can be helped at a primary emergency eyewash device. Contains one 16 oz. sterile eyewash bottle.

**4114**

### DOUBLE WALL STATION

Provide immediate flushing until the injured person can be helped at a primary emergency eyewash device. Contains two 32 oz. sterile eyewash bottles.

**4127** DOUBLE WALL STATION

**4124** 32 oz. refil





Speakman® plumbed eye/face wash stations and deluge showers help provide immediate relief to victims of chemical burns. The Speakman's soft, aerated water flow provides soothing, wide coverage and the stay-open ball valves ensure hands-free operation once activated. All products meet ANSI Z385.1 compliance.



#### **SPEAKMAN® DELUGE SHOWER**

Impeller action deluge showerhead features a vertical overhead supply with stay-open ball valve, allowing hands-free operation once the shower has been activated. The high visibility yellow pull rod makes finishing the SE-220 easy in an emergency.

**SE220**



#### **SPEAKMAN® SELECT EYE/FACE WASH STATION**

Soft aerated sprays allow users to comfortably flush eyes for the ANSI-recommended 15 minutes. A stainless-steel push handle activates the unit. The SE-400 is a wall-mounted unit with a stainless steel bowl and comes complete with a wall-mount bracket.

**SE400**



#### **SPEAKMAN® TRADITIONAL EYE/FACE WASH STATION**

Aerated water flow allows soft flowing water to provide wider coverage, cleaning full facial areas. Unit is equipped with a stay-open ball valve activated by a paddle handle allowing hands-free operation once the eye/face wash has been activated. The SE-490 is a wall-mounted unit with a stainless steel bowl.

**SE490**



#### **SPEAKMAN® TRADITIONAL EYE/FACE WASH STATION**

Aerated water flow allows soft-flowing water to provide wider coverage, cleaning full facial areas. Unit is equipped with a stay-open ball valve activated by a paddle handle allowing hands-free operation once the eye/face wash has been activated. The SE-580 is a wall-mounted unit with a yellow bowl.

**SE580**



#### **SPEAKMAN® COMBINATION UNIT**

Features an impeller action deluge showerhead and a 1.25" galvanized steel stanchion. The SE-675 model features a stay-open ball valve, allowing hands-free operation once the shower has been activated, and an SE-575 eye/face wash, without a bowl. The high visibility yellow pull rod, makes finishing the SE-675 easy in an emergency.

**SE675**

## GREEN GUARD RELIEF TABLETS

UniFirst First Aid + Safety offers our own proprietary Green Guard products, which are a key part of your first aid program. When employees don't feel well, they don't perform well. Green Guard relief tablets provide the relief that keeps them on the job and also offer complete bilingual English/Spanish drug facts and instructions.

To ensure safety, all Green Guard relief tablets are supplied in tamper-evident packets. Each product box and inside packet is color coded for positive identification. Each packet provides directions for use, active ingredients, indications, and lot number with an expiration date. There are a variety of products and sizes to meet your specific needs.



### IBUPRO RELIEF

Temporarily relieves minor aches and pains and reduces fever due to: arthritis, toothache, muscular aches, backache, menstrual cramps, headache, and the common cold.

**2250** 100/box  
**2251** 250/box



### NON-ASPIRIN RELIEF

Maximum-strength relief provides temporary reduction of fever and relief of aches and pains associated with: headaches, muscle aches, the common cold, menstrual cramps, minor arthritis pain, toothache, and backaches.

**2224** 100/box  
**2222** 250/box



### ADVANCED SINUS RELIEF

A non-drowsy formula. Temporarily relieves the following symptoms associated with the common cold, sinusitis, or hay fever: nasal congestion, sneezing, runny nose, low fever, and minor aches and pains.

**2206** 100/box  
**2207** 250/box

NEW



### EXTRA STRENGTH PAIN RELIEF

Provides relief from backache and muscle aches with caffeine to aid in faster relief.

**2180** 80/box  
**2181** 200/box

NEW



### MENSTRUAL CRAMP RELIEF

Provides relief from bloating and water weight gain as well as headache, muscle aches, cramps and irritability.

**2380** 80/box  
**2381** 200/box



### MAXIMUM-STRENGTH STOMACH RELIEF

Assorted berry flavor. Provides maximum-strength relief from acid indigestion, heartburn, and upset stomach.

**2280** 100/box  
**2281** 150/box

NEW



### MULTI-SYMPTOM COLD RELIEF

Non-drowsy, fast-acting, multi-symptom relief of coughs, chest congestion, sinus pressure and headaches.

**2580** 80/box  
**2581** 200/box



### ALLERGY² RELIEF

For the temporary relief of nasal congestion due to a cold, hay fever, or other respiratory allergies. Temporarily relieves stuffy nose, sinus congestion, and pressure.

**2230** 100/box  
**2231** 250/box



### CHERRY COUGH DROPS RELIEF

A medicated, soothing drop for the temporary relief of symptoms as occur with colds or inhaled irritants. For the temporary relief of coughs. Non-narcotic.

**2241** 50/box  
**2242** 125/box

## BENEFITS OF OFFERING UNIFIRST'S GREEN GUARD RELIEF BRAND TABLETS TO YOUR EMPLOYEES

**Increased Productivity:** Pain and discomfort often lead to decreased productivity and increased absenteeism, costing employers far more than what is spent on first aid tablet . Green Guard's tablets cost pennies per dose and can help lower absenteeism and increase productivity.

**Safety:** By providing safe, individual, and tamper-evident unit-dose packets, employers decrease the risk of improperly shared medications and cross-contamination. Unlike some other brands, all Green Guard relief tablets are non-drowsy formulas for safe use in the workplace. An additional benefit of our service is that on each visit, our trained representatives ensure that no products in your cabinet have exceeded their shelf life.

**Quality:** All Green Guard relief tablets are packaged in our own state-of-the-art, FDA-registered facility. In addition to packaging our own Green Guard relief tablets, we package over 500,000,000 OTC tablets for other well-known companies.

**Bilingual Labeling:** All Green Guard relief tablet cartons contain directions, indications, contraindications, ingredients, and proper dosages in both English and Spanish.

**Morale:** Employees see and appreciate the availability of Green Guard relief tablets as a valuable employee benefit .

**Liability:** All of Green Guard's products, including first aid tablets, are backed by our multi-million dollar product liability insurance for added peace of mind.



### HONEY LEMON COUGH DROPS RELIEF

A medicated, soothing drop for the temporary relief of symptoms as occur with colds or inhaled irritants. For the temporary relief of coughs. Non-narcotic.

**2243** 50/box  
**2244** 125/box

## ANSI STANDARD Z308.1-2021

ANSI recommends that: First aid kits contain an oral analgesic.

ANSI recommends that: Any additional over-the-counter drug product included in a first aid kit should be packaged in single-dose, tamper-evident packaging with full labeling as required by FDA regulations, and should contain no ingredients that are known to cause drowsiness.



## MEDIQUE OTC MEDICATIONS

UniFirst First Aid + Safety stocks a variety of specialty formulas from our own proprietary Medique products, the leader in industrial over-the-counter medications.

NEW



### BACK PAIN RELIEF

Compare active ingredient to Extra Strength Doan's. Temporarily relieves minor backache pain.

**07480** 80/box



### MEDIPROXEN

Compare active ingredient to Aleve®. Long-lasting relief from pain associated with headaches, muscular aches, and minor arthritis. Effectively reduces fevers from colds and flu.

**23733** 100/box



### ASPIRIN

Temporarily relieves minor aches and pains due to headache, muscular aches, minor arthritis pain, and toothache.

**80548** 250/box

**80533** 100/box



### DIOTAME

Compare active ingredient to Pepto-Bismol®. Chewable, sugar-free antacid/diarrhea relief tablets. Soothes irritation with a protective coating action, without constipating.

**22033** 100/box

**22083** 30/box



### DIAMODE

Compare active ingredient to Imodium® AD. Anti-diarrheal medications clinically proven for control and symptomatic relief of acute non-specific diarrhea.

**20050** 50/box

**20069** 6/box



### MEDI-SELTZER®

Compare active ingredient to Alka-Seltzer®. Effervescent pain reliever and antacid with specially buffered aspirin.

**13520** 36/box



### LORADAMED

Compare active ingredient to Claritin®. Relief of symptoms due to hay fever and upper respiratory allergies such as runny nose, itchy and watery eyes, sneezing, and itching of the nose or throat.

**20350** 50/box



### DIPHEN

Compare active ingredient to Benadryl®. Relief from allergies and hay fever. May cause drowsiness.

**18464** 24/box



### COLD-EEZE®

Reduces the duration and symptoms of the common cold including cough, stuffy nose, sore throat, sneezing, post-nasal drip, and hoarseness.

**45873** 25/box



### MEDI-LYTE®

Sodium-free, sugar-free, and lactose-free relief from heat stress, fatigue, and muscle cramping due to minerals lost to heat and perspiration.

**03033** 100/box

## CONSUMER BRAND MEDICATIONS

The name brands you know in convenient tamper-evident, individual-dose packages.



### ADVIL®

Relieves minor aches and pains and reduces fever.

**40933** 100/box



### ALEVE®

Relieves minor arthritis and muscle aches and pains.

**48850** 50/box



### TYLENOL® EXTRA STRENGTH

Non-aspirin relief from pain and for the reduction of fever.

**49733** 100/box



### ALKA-SELTZER®

Efervescent pain relief.

**2307** 36/box



### PEPTO-BISMOL®

Provides relief from heartburn, indigestion, nausea, upset stomach, and diarrhea.

**2346** 48/box



### TRANSCEND™ GLUCOSE

The premium fuel needed for rapid management of blood sugar and lasting energy or for the fast treatment of diabetic emergencies. Strawberry fl vor.

**10346** 15 gm

## SAFETY EYEWEAR

All of our safety glasses meet or exceed ANSI Z87+ requirements. Most styles are available with clear, gray and amber lenses. Some are also available in silver mirror, blue mirror and light blue lenses. AS - Anti Scratch / AF - Anti Fog / F3S - Fogless® 3Sixty™ - a superior coating that repels moisture and prevents fog from gathering on lenses.



### ZENON Z13® SAFETY GLASSES

Lightweight, rimless design

<b>250-06-0000</b>	Clear AS
<b>250-06-0020</b>	Clear AS/AF
<b>250-06-5501</b>	Grey AS
<b>250-06-5503</b>	Light Blue AS
<b>250-06-5509</b>	Amber AS
<b>250-06-0006</b>	Blue Mirror AS
<b>250-06-0002</b>	In/Out AS
<b>250-06-0005</b>	Silver Mirror AS



### ZENON Z12® GLASSES

Lightweight, rimless design

<b>250-01-0900</b>	Clear AS
<b>250-01-0920</b>	Clear AF/AS
<b>250-01-0001</b>	Grey AS
<b>250-01-5509</b>	Amber AS
<b>250-01-0902</b>	In/Out AS
<b>250-01-F020</b>	Foam Lined AS/AF
<b>250-01-D520</b>	AS/F3S Blue Metal Detect.



### ZENON ULTRA-LYTE® SAFETY GLASSES

Ultra-lightweight design conforms to the head promoting all-day wear

<b>250-14-0000</b>	Clear AS
<b>250-14-0001</b>	Grey AS
<b>250-14-0009</b>	Amber AS
<b>250-14-0020</b>	Clear AS/AF
<b>250-14-0021</b>	Grey AS/AF
<b>250-14-0520</b>	Clear AS/F3S
<b>250-14-0521</b>	Gray AS/F3S



### ANSER® SAFETY GLASSES

Lightweight, semi-rimless design

<b>250-AN-10110</b>	Clear AS
<b>250-AN-10111</b>	Clear AS/AF
<b>250-AN-10112</b>	Grey AS
<b>250-AN-10126</b>	Grey AS/AF
<b>250-AN-10120</b>	Amber AS
<b>250-AN-10114</b>	In/Out AS
<b>250-AN-10520</b>	Clear F3S
<b>250-AN-10521</b>	Grey F3S



### HI VOLTAGE AC® SAFETY GLASSES

Adjustable length temples with rubber tips provide a comfortable fit.

<b>250-21-0400</b>	Clear AS
<b>250-21-0401</b>	Grey AS
<b>250-21-0403</b>	Lt. Blue AS
<b>250-21-0409</b>	Amber AS
<b>250-21-0420</b>	Clear AS/AF



### COMMANDER® SAFETY GLASSES

Lightweight, semi-rimless design offers extensive eye coverage and all day comfort.

<b>250-33-0020</b>	Clear AS/AF
<b>250-33-0021</b>	Grey AS/AF



### HI VOLTAGE ARC® SAFETY GLASSES

Lens design maximizes view, providing user comfort and safety

<b>250-24-0000</b>	Clear AS
<b>250-24-0001</b>	Grey AS



### SCOUT® SAFETY GLASSES

Flame resistant soft foam padding forms a seal to keep out dust and airborne particles.

<b>250-99-0980</b>	Clear
<b>250-99-0900</b>	Clear AS
<b>250-99-0901</b>	Gray AS



### RECON® SAFETY GLASSES

Lightweight, rimless design

<b>250-32-0020</b>	Clear AS/AF
<b>250-32-0021</b>	Grey AS/AF
<b>250-32-0226</b>	In/Out Blue Lens AS/AF
<b>250-32-0520</b>	Clear AS/F3S
<b>250-32-0521</b>	Gray AS/F3S



### FUSELAGE® SAFETY GLASSES

Flame resistant soft foam padding forms a seal to keep out dust and airborne particles.

<b>250-50-0420</b>	Clear AS/AF
<b>250-50-0520</b>	Clear F3S



### MAG READERS™

Semi-Rimless Safety Readers with Black Frame, Clear Lens and Anti-Scratch Coating (5 diopters to choose from)

<b>250-25-0010</b>	+1.00 Clear AS
<b>250-25-0015</b>	+1.50 Clear AS
<b>250-25-0020</b>	+2.00 Clear AS
<b>250-25-0025</b>	+2.50 Clear AS
<b>250-25-0030</b>	+3.00 Clear AS



### HARD PLASTIC SIDE SHIELDS

**252-FX-0001**





#### DIRECT VENT GOGGLE

Offers direct side ventilation through perforations in the frame.

**248-4400-300** Clear

**248-4400-400** Clear AS/AF



#### INDIRECT VENT GOGGLE

Offers indirect ventilation through plastic hooded vents in the frame.

**248-4401-300** Clear

**248-4401-400** Clear AS/AF



#### STONE™ INDIRECT VENT GOGGLE

Offers indirect ventilation through plastic hooded vents in the frame.

**251-60-0020** Clear AS/F3S



#### STONE™ FACE SHIELD

ANSI Rated Polycarbonate attachment for Stone™ Goggle.

**251-60-000V** Grey

### OSHA REGULATION 29CFR 1910.133(A)(1)

The employer shall ensure that each affected employee uses appropriate eye or face protection when exposed to eye or face hazards from flying particles, molten metal, liquid chemicals, acids or caustic liquids, chemical gases or vapors, or potentially injurious light radiation.



#### HEADGEAR

Ratchet suspension provides effortless size adjustment. Lightweight and durable blue polypropylene. Visor attaches easily with pin adjustment, and conveniently flips up out of the way when not in use.

**251-01-5400**



#### FACE SHIELD

Made with virgin resin, which leads to better uniformity of the viewing area. Universal hole pattern will fit most headgear and hard hat adapters in the market.

**251-01-5201**

Polycarbonate

**251-01-5211**

PETG

## LENS CLEANING

4170



#### MULTI-PURPOSE CLEANING TOWELETTES

**4170** 100/box

#### TISSUES FOR METAL LENS CLEAN STATION (not shown)

**4131**

#### SOLUTION FOR METAL LENS CLEAN STATION (not shown)

**4132** 16 oz.



#### LENS CLEANING STATION

Contains 8 oz. bottle of anti-fog, anti-static and 2 boxes of 300 ct. tissues.

**4120**



#### LENS CLEANING STATION WITH MIRROR

Contains refillable spray and tissues.

**4160**

#### UVEX LENS CLEANING SOLUTION

**4161** 16 oz.

#### UVEX LENS CLEANING TISSUES

**4162** 500 ct.

#### LENS CLEANING TOWELETTE DISPENSER (not shown)

**252-LCT100** 100 ct.

## HAND PROTECTION

We offer hand protection ranging from examination and chemical protection gloves to leather work and welding gloves to ensure that workers' hands are protected no matter the environment.



### NITRILE EXAM GLOVES

Powder free

<b>2910S</b>	Small
<b>2910M</b>	Medium
<b>2910L</b>	Large
<b>2910XL</b>	X-Large
(100/box)	



### VINYL EXAM GLOVES

Powder free

<b>2750S</b>	Small
<b>2750M</b>	Medium
<b>2750L</b>	Large
<b>2750XL</b>	X-Large
(100/box)	



### LATEX EXAM GLOVES

Powder free

<b>2800S</b>	Small
<b>2800M</b>	Medium
<b>2800L</b>	Large
<b>2800XL</b>	X-Large
(100/box)	

### OSHA REGULATION 29CFR 1910.138

Employers shall select and require employees to use appropriate hand protection when employees' hands are exposed to hazards such as those from skin absorption of harmful substances; severe cuts or lacerations; severe abrasions; punctures; chemical burns; thermal burns; and harmful temperature extremes.



### PREMIUM UNLINED 13" NITRILE GLOVES

12 mil

<b>24128</b>	Size 8
<b>24129</b>	Size 9
<b>241210</b>	Size 10
<b>241211</b>	Size 11
(12 pairs/pack)	



### PREMIUM FLOCK-LINED 13" NITRILE GLOVES

15 mil

<b>24187</b>	Size 7
<b>24188</b>	Size 8
<b>24189</b>	Size 9
<b>241810</b>	Size 10
<b>241811</b>	Size 11
<b>241812</b>	Size 12
(12 pairs/pack)	



### HIGH-RISK/EMS LATEX GLOVES

14 mil, powder free

<b>2550S</b>	Small
<b>2550M</b>	Medium
<b>2550L</b>	Large
<b>2550XL</b>	X-Large
(50/box)	



### PREMIUM NEOPRENE-OVER-LATEX, FLOCK-LINED GLOVES

28 mil

**22249** Size 9 (12 pairs/pack)

**22249P** Size 9 (1 pair)

**222410** Size 10 (12 pairs/pack)



### LATEX-COATED KNIT GLOVES

White cotton/polyester 7-cut knit liner with a light latex.

**708SLC** Large

(12 pairs/pack)



### ATLAS LATEX PALM-COATED KNIT GLOVES

Grey cotton/polyester, 10-cut knit liner, heavy latex with textured palms and finger .

**700SLCS** Small

**700SLCM** Medium

**700SLCL** Large

**700SLCXL** X-Large  
(12 pairs/pack)



### LATEX PALM-COATED, CRINKLE FINISH GLOVES

Coated palm and fingers safety cu .

**73003** Men's  
(12 pairs/pack)



### STANDARD STRING-KNIT POLY/COTTON GLOVES

Natural string knit, 7-cut cotton/polyester.

**708S** Men's  
(12 pairs/pack)



### PVC-DOTTED STRING-KNIT GLOVES

Premium, natural, white string knit. PVC dots on one or both sides.

**708SK** Large, dotted one side

**708SKBS** Men's, dotted both sides

**708SKBSL** Women's, dotted both sides

**709SKBSY** Youth, dotted both sides  
(12 pairs/pack)



### STANDARD POLY/COTTON BROWN JERSEY GLOVES

Knit wrist for a better comfort. Clute cut.

**750** Men's  
**750L** Women's  
(12 pairs/pack)



### SELECT GRAIN COWHIDE LEATHER DRIVER GLOVES

Welted seams on middle fingers straight thumb, shirred elastic wrist.

**990S** Small  
**990M** Medium  
**990L** Large  
**990XL** X-Large  
(12 pairs/pack)



### SELECT SPLIT COWHIDE RUBBERIZED-CUFF GLOVES

Durable select split cowhide leather. Leather finger ips and knuckle strap.

**500** Men's  
(12 pairs/pack)



### SELECT SPLIT COWHIDE LEATHER DOUBLE-PALM GLOVES

Select split double-leather palm, leather finger ips, and knuckle strap.

**500DP** Men's rubberized safety cu  
**528DP** Men's plasticized safety cu  
(12 pairs/pack)



### STANDARD SPLIT COWHIDE PATCH-PALM GLOVES

Standard shoulder leather, patch palm, welted seams on middle fingers, .5" safety cu , and leather knuckle strap.

**500BDBR** Men's  
(12 pairs/pack)



## HAND PROTECTION



### STANDARD GREY SPLIT COWHIDE LEATHER WELDER GLOVES

Standard grey split cowhide leather welder gloves provide excellent heat protection. One-piece palm has no exposed seams. Cotton sock lining absorbs perspiration. Heavy full-leather gauntlet cuff.

**930** Men's  
(12 pairs/pack)



### TOP-GRAIN KIDSKIN MIG WELDING GLOVES

Top-grain elk provides the best fit and feel in high-heat welding conditions. 14" length protects hands and arms from sparks and spatter. Additional layer of foam on palm and back of hand provides added heat insulation.

**9061S** Small  
**9061M** Medium  
**9061L** Large  
**9061XL** X-Large  
(1 pair)



### PREMIUM GRAIN KIDSKIN TIG WELDING GLOVES

Premium top-grain kidskin provides the best fit and dexterity necessary for TIG welding. Soft leather allows wire to pass freely over glove. 2" cuff protects hands and wrist from burns while allowing freedom of movement.

**6140S** Small  
**6140M** Medium  
**6140L** Large  
**6140XL** X-Large  
**6140XXL** XX-Large  
**6140XXXL** XXX-Large  
(1 pair)



### INSULATED PREMIUM SIDE-SPLIT COWHIDE WELDING GLOVES

Premium side-split cowhide provides the most durable protection in high-heat welding conditions. 14" length protects hands and arms from sparks and spatter. Additional layer of foam on palm and back of hand provides added heat insulation. Double-reinforced thumb combines thumb strap with an added patch on thumb saddle to protect high-stress area.

**9051M** Medium  
**9051L** Large  
**9051XL** X-Large  
(12 pairs/pack)

## PROTECTIVE CLOTHING



### HAIR NET

White

**UB-21-1000** 21", 500/case  
**UB-24-1000** 24", 500/case

### BEARD COVERS

**10210** 500/case



### KEVLAR SLEEVE

**2514K** 14" no thumbhole  
**2518K** 18" no thumbhole  
**2518KT** 18" with thumbhole



### APRONS

**7100** Blue vinyl 35" x 45" (shown)  
**8860** Urethane/nylon yellow  
**UHYAB1245I** Hycar 35" x 45"  
**A2836D1** Denim 28" x 36"  
no pocket



### COVERALLS

**3600L** Posiwear BA coverall, 25/case  
**C3802** Coverall with elastic wrist and ankle, 25/case (Small-XXX-Large)  
**13500L** Economy propylene coverall, 25/case (shown)



### RAINSUITS

Three pieces

**8870S** Small  
**8870M** Medium  
**8870L** Large  
**8870XL** X-Large



### HARD HAT

ANSI Z89.1-2003

**7090** White  
**7090Y** Yellow

### HARD HAT WITH RATCHET SUSPENSION

ANSI Z89.1-2003

**7089** White  
**7089Y** Yellow



# HEARING PROTECTION

We carry PIP earplugs, ear bands, and earmuffs in a range of noise reduction ratios (NRR) for many different work environments and applications.



**MEGA FLARE™ PLUS**  
NRR 33dB

**267-HPF910C** Corded  
100 pair  
**267-HPF910** No cord  
200 pair



**MEGA FLARE™**  
NRR 32dB

**267-HPF410C** Corded  
100 pair  
**267-HPF410** No cord  
200 pair



**NANO BULLET™**  
NRR 28dB

**267-HPF310C** Corded  
100 pair  
**267-HPF310** No cord  
200 pair



**MEGA BULLET™**  
NRR 32dB

**267-HPF210C** Corded  
100 pair  
**267-HPC210** No cord  
200 pair



**MEGA T-FIT™**  
NRR 32dB

**267-HPF510C** Corded  
100 pair  
**267-HPF510** No cord  
200 pair



**PIP® REUSABLE EARPLUGS**  
NRR 25dB

**267-HPR320C** Corded  
100 pair



**POLYURETHANE FOAM  
BANDED EARPLUGS**  
NRR 22dB

**7014** Each



**THUNDER® EARMUFFS**  
NRR 30dB

**7081** Each



## PREFILLED MEGA FLARE™ PLUS EAR PLUG DISPENSER - 400 PAIRS

- Prefilled dispenser includes 400 pairs of Mega Flare™ Plus ear plugs
  - Table top install and easy to use
  - Controlled release mechanism ensures the correct number of plugs are dispensed into a collection tray
  - Sufficient capacity to supply large production areas
  - Transparent design to monitor the number of earplugs remaining
- \* Refills with PIP Mega Flare™ Earplugs

**267-HPD910-400**

## OSHA REGULATION 29CFR 1910.95(C)(1)

The employer shall administer a continuing, effective hearing conservation program whenever employee noise exposures equal or exceed an eight-hour time-weighted average sound level (TWA) of 85 decibels (dB).

## RESPIRATORY PROTECTION

Our respirators help ensure that your workers are protected against dust as well as dangerous vapors and gases that can lead to respiratory damage.



### N95 RESPIRATOR

Disposable

**5001** 20/box



### N95 RESPIRATOR WITH VALVE

Disposable

**270-RPD714N95** 12/box



### DUST/NUISANCE MASK

Disposable

**10028560** 50/box



### COMFORT-AIR SERIES 100 HALF-MASK RESPIRATOR

**5060** Small  
**5061** Medium  
**5062** Large

### COMFORT-AIR SERIES 400 HALF-MASK RESPIRATOR

**5050** Small/Medium  
**5051** Medium/Large

### COMFORT-AIR SERIES 130M FULL-FACEPIECE RESPIRATOR

**130-M-00** Full assembly

### OSHA REGULATION 29CFR 1910.134(A)(2)

Respirators shall be provided by the employer when such equipment is necessary to protect the health of the employee. The employer shall provide the respirators which are applicable and suitable for the purpose intended.

### COMFORT-AIR FILTERS, CARTRIDGES AND COMBINATION CARTRIDGES



#### DISKIT™ P100 FILTER

**5066**



#### ORGANIC VAPOR

**5052**



#### ACID GAS AND CHLORINE DIOXIDE

**5053**



#### ACID GAS AND ORGANIC VAPOR

**5058**



#### P100 LOW PROFILE FILTER

**5054**



#### N95 FILTER PAD

**5055**



#### ORGANIC VAPOR/P100

**5067**



#### ACID AND CHLORINE DIOXIDE/P100

**5059**



#### ACID GAS AND ORGANIC VAPOR/P100

**5065**



### BITREX QUALITATIVE FIT TEST

**5011**

## ERGONOMIC SUPPORT

### BACK SUPPORT WITH SUSPENDERS

**6295S** Small  
**6295M** Medium  
**6295L** Large  
**6295XL** X-Large



### WRIST SUPPORT

Beige, specify left or right and size.

**1374**

### WRIST SUPPORT

Beige, specify left or right and size.

**4039**

### WRIST COMPRESSION

Beige, slip-on.

**1361** 6"

### WRIST SUPPORT

Black, specify left or right and size.

**6268**





## SEASONAL PRODUCTS

When working outdoors in the heat, it's important to have protection from sun exposure and excessive heat, as well as insect bites and poison oak and ivy.



### TICK AND INSECT REPELLENT WIPES

**8351**



### INSECT REPELLENT 25% DEET

**8350** 6.5 oz.  
aerosol  
bottle



### TECNU OAK-N-IVY WIPES

**23202** 4/box



### STING RELIEF WIPES

**3041** 100/bag



### SUNX®30+ SUNSCREEN

Serious sun protection.  
SPF 30 sunscreen.

**8381** 0.25oz packet  
**12200SD** 50 pkts/box  
**12200SD** 100 pkts/box  
**71671** 32 oz jug  
**71745** 32 oz pump  
**71771** 1 gal jug  
**71444** Lotion/  
Towelette  
Combo



### IVY RID® SPRAY

**48717** 3 oz.  
aerosol  
can



### TECNU CLEANSER

Outdoor skin  
cleanser.

**8360** 4 oz. bottle



### IVAREST® CREAM

**3108** 2 oz.  
tube

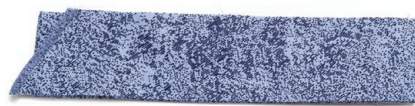
## NEW



### ALL SPORT ZERO STICKS

Take All Sport with you wherever you go! For optimal hydration & electrolyte replenishment, add contents to 16.9 oz bottle of water. Add to 20 oz of water for a lighter taste. Perfect for vending machines!

**AS32** Blue Razz, 50/box  
**AS33** Lemon Lime, 50/box  
**AS34** Orange, 50/box  
**AS35** Fruit Punch, 50/box  
**AS36** Grape, 50/box  
**AS37** Strawberry Banana, 50/box



### COOLING BANDANA

Denim

**8378D**

### SWEATBAND

Cellulose

**7092** (Not Shown)

## NEW



### ALL SPORT FREEZER POPS

**AS01** Freezer Bar  
**AS02** Zero Frozen Bar (not shown)

## NEW



### ALL SPORT 2.5 GALLON MIX

**AS11** Variety Pack  
**AS12** Blue Razz Ice  
**AS13** Lemon Lime  
**AS14** Orange  
**AS15** Fruit Punch  
**AS16** Grape

### ALL SPORT ZERO 2.5 GALLON MIX

**AS21** Variety Pack  
**AS22** Blue Razz Ice  
**AS23** Lemon Lime  
**AS24** Orange  
**AS25** Fruit Punch  
**AS26** Grape



### MEDI-LYTE®

Sodium-free, sugar-free, and lactose-free relief from heat stress, fatigue and muscle cramping due to minerals lost to heat and perspiration.

**03033** 100/box



### EZ COOL® TOWEL

Evaporative PVA Cooling Towel

**12420** Blue  
**12439** High Vis Lime

## FACILITY SERVICES

Proper sanitation, including cleanliness, plays a major role in reducing illness and the transmission of germ and virus-born disease. UniFirst First Aid + Safety's industrial restroom products assist you in meeting your cleanliness goals.

### TORK® ELEVATION® CENTERFEED TOWEL DISPENSER

Easy, one-hand operation. Helps eliminate cross contamination. Reduces paper usage. Ideal for areas where hand and light surface wiping are combined.

**9500** 14.4"H x 9.4"W x 9"D

#### PAPER REFILL

WHITE, 2-PLY

**9501** 6 rolls/case



### TORK MATIC® HAND TOWEL ROLL DISPENSER WITH INTUITION® SENSOR (TOUCHLESS ELECTRONIC)

Upscale design enhances decor with electronic, touchless dispensing. Adjustable towel length controls consumption and minimizes waste. Reduces paper usage. Uses 3 size D batteries. Ideal for high-traffic environments.

**9570** 14.5"H x 13"W x 8"D

#### PAPER REFILL

WHITE, 1-PLY

**9571** 6 rolls/case



### TORK® ELEVATION® JUMBO TOILET PAPER DISPENSER

Efficient design reduces maintenance costs and waste. Stub roll feature allows for longer times between refills and complete paper consumption. Ideal for high-traffic environments.

**9505** 14.2"H x 17.2"W x 5.2"D;  
Capacity: 1 roll

#### PAPER REFILL

STANDARD 2-PLY

**9506** 6 rolls/case

### TORK® TOILET SEAT COVER DISPENSER

Made from white ABS plastic. Protected storage for seat covers.

**9507** 12"H x 16"W x 2"D



### TOILET SEAT COVER REFILLS

Easily dispensable, ready-for-use format. 1/2-fold design. Hygienic, helps protect users from cross contamination.

**95081** Refill 250/package





### TCELL AIR FRESHENER

Freshener system helps control unpleasant odors. Cartridges are easy to change and install. MB 9000 spray options also available.

Dispenser:	<b>9660</b>	
Refills:	<b>9662</b>	Polar Mist Scent
	<b>9663</b>	Blue Splash Scent
	<b>9665</b>	Citrus Scent
	<b>9680</b>	Mango Blossom Scent
	<b>9681</b>	Cucumber Melon Scent



### BAG IN BOX DISPENSER

GOJO® 800mL series bag-in-box dispensing systems have portion control and sanitary-sealed refills.

Dispenser:	<b>9518</b>	800mL
Refills:	<b>9521</b>	Pink Pearl Soap
	<b>9522</b>	Green Pumice Soap
	<b>9523</b>	Antibacterial Soap



### GOJO® ORANGE PUMICE SOAP

Lotion hand cleaner with orange citrus ingredients and natural pumice scrubbers. For removing grease, tar, and oil. Use with or without water.

**9534**



### INSTANT HAND SANITIZER

Kills 99.99% of the most common germs that may cause illness. Fits Purell® Bag in Box Dispenser.

**9526** 800mL



### TFX™ TOUCH-FREE DISPENSERS

GOJO® and PURELL® TFX™ touch-free dispensers and hand care products provide portion controls and effective, trouble-free performance. Fully ADA compliant, UL/CE Registered.

Sanitizer Dispenser:	<b>9530</b>	1200mL, white
Sanitizer Refill:	<b>9531</b>	1200mL PURELL Foam Hand Sanitizer
Soap Dispensers:	<b>9529</b>	1200mL, white
	<b>9530B</b>	1200mL, black
Soap Refills:	<b>9532</b>	1200mL GOJO Foam Antibacterial Soap
	<b>9533</b>	1200mL GOJO Foam Handwash with Conditioner
Accessories:	<b>9530S</b>	Floor Stand (not shown)



### PURELL® SANITIZING WIPES

Kills 99.99% of the most common germs that may cause illness. Portable, convenient, and easy to use.

**9581** 270 ct. canister



### GOJO® SCRUBBING WIPES

Heavy-duty hand cleaning. Formulated to lift heavy dirt and grime from skin. Portable, convenient, and easy to use.

**9582** 80 ct. packets  
**9583** 25 ct. canister  
**9584** 170 ct. canister



## INDUSTRIAL/ENVIRONMENTAL SAFETY

Made in the USA and ISO-9001 certified, Eagle is a prime manufacturer of safety cans, safety cabinets, secondary spill containment pallets, poly drums, material-handling protective products, and cigarette receptacles.



### TYPE-I SAFETY CANS

Eagle galvanized Type-I safety cans meet OSHA and NFPA Code 30 requirements and are UL and ULC Listed and FM approved for safe handling and storage of gasoline and other flammable liquids.

**2 GALLON**  
**UI20S**

**5 GALLON**  
**UI50S**



### TYPE-II SAFETY CANS

Features two openings, one with a pressure-relief spring-closing lid for filling and one with an actuated pour valve with a flexible metal spout for safer controlled dispensing. FM, UL, and ULC approved and meet OSHA and NFPA Code 30 requirements.

**5 GALLON**  
**U251S**



### FLAMMABLE STORAGE SAFETY CABINETS

Keep flammable liquids near work areas in Eagle safety storage cabinets, constructed of 18-gauge steel. Sides, top, bottom, and doors are double-walled with a 1.5" air space between walls. Both doors, with 2" threaded fittings, have fire baffle and . Cabinets come in yellow high-gloss powder finish with red warning. Also has grounding attachment, three-point key lock, and 2" raised, leak-proof door sill.

**4 GALLON**  
One manual door.  
**1904** (not shown)

**45 GALLON**  
Two manual doors.  
**1947**

**30 GALLON**  
Two manual doors.  
**1932**



### CIGARETTE DISPOSAL

Available in a variety of designs and sizes, Eagle cigarette receptacles provide for clean and safe disposal of ashes and cigarette butts for every location.

**5 QUART**  
Colors: Grey, Beige, Brown, Black, Blue, Green  
**1206**

**4 GALLON**  
Colors: Grey, Beige, Brown, Black, Blue, Green  
**1208**

**5 GALLON**  
Colors: Yellow, Beige  
**1200**

Please specify color when ordering.

## POLY SPILL-CONTAINMENT DRUMS

These tough Eagle products handle all of your hazardous material needs. Constructed of chemical-resistant high-density polyethylene, they are lightweight, nestable, and include UV inhibitors. All drums meet FDA 21 CFR 177.1520 (Food Grade Quality).

### 20 GALLON LAB PACK

Screw lid. Meets DOT 49 CFR 173.12.

**1650**

### 30 GALLON LAB PACK

Metal lever ring. Meets DOT 49 CFR 173.12.

**1601MB**

### 95 GALLON OVERPACK DRUM

Screw lid. Meets DOT 49 CFR 173.25.

**1690**



## SPILL-CONTAINMENT PLATFORMS AND PALLETS

These pallets offer the most flexible and comprehensive spill protection, containment, and storage products on the market today. Polyethylene construction for excellent chemical resistance and feature Eagle's patented removable poly grating for easier cleaning.

### 4 DRUM LOW PROFILE PALLET

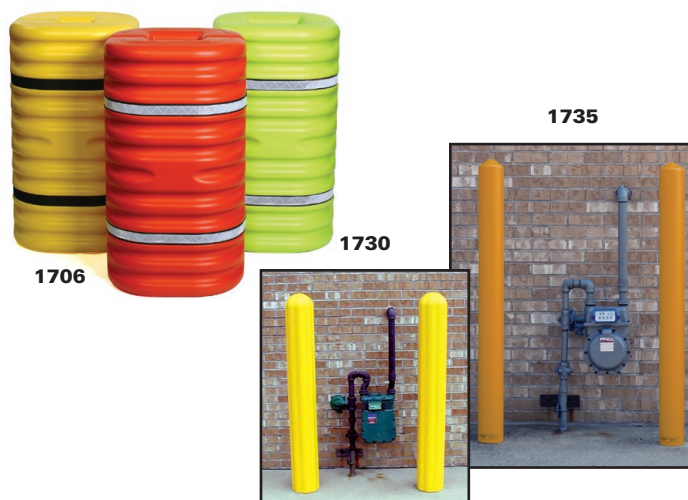
**1645**

### 2 DRUM PLATFORM

**1632** (not shown)

### 4 DRUM PLATFORM

**1634** (not shown)



## COLUMN PROTECTORS AND POST SLEEVES

Column protectors provide a durable protection for warehouse and factory columns and beams. Bumper-post sleeves make old bollard posts look like new. High visibility yellow HDPE construction with UV inhibitors resists fading, rusting, or cracking.

### COLUMN PROTECTORS

**1706**

### BUMPER POST SLEEVE

**1730**

### SMOOTH POST SLEEVE

**1735**

## COMPLIANCE AND SIGNAGE

Make sure your facility is OSHA and ANSI compliant with lockout centers, MSDS stations, and required signage to raise safety awareness.



8671

### RIGHT-TO-KNOW COMPLIANCE CENTER

14" x 20"

**8670** White/Red  
**8671** Yellow/Red

### LOCKOUTS

#### LOCKOUT CENTER

Six padlocks, two multiple steel lockouts, and lockout tags with zip ties.

**8680**

#### LOCKOUT TAGS

**8685**

#### 1" STEEL MULTIPLE LOCKOUTS

**8686**

#### 1½" STEEL MULTIPLE LOCKOUTS

**8687**

#### ¾" SHACKLE PADLOCK

**8688**

#### 2" SHACKLE PADLOCK

**8688**



8680

### SAFETY SIGNS

Safety signs are available in a wide variety of messages and materials. Please call or consult your representative.

#### ABCs OF SAFETY

19" x 24"

**8900**

#### ABCs OF SAFETY, SPANISH

19" x 24"

**8900S** (not shown)

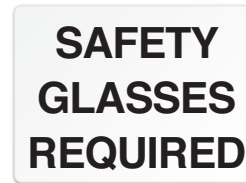
#### CHOKING POSTER

20" x 15"

**8900C** (not shown)

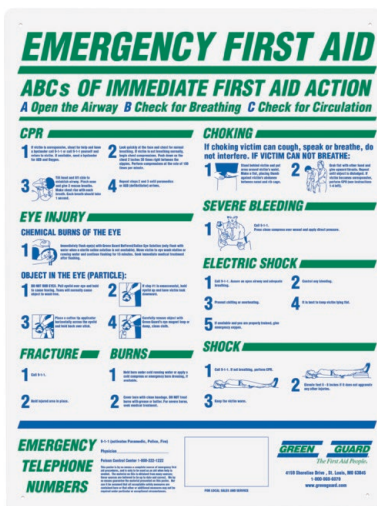
#### STANDARD PLASTIC SIGNS

Signs include eyewash station, hard-hat area, first aid, and safety glasses required. 8" x 10".



### OSHA REGULATION 29CFR 1910.147(A)(3)(I)

This section requires employers to establish a program and utilize procedures for affixing appropriate lockout devices or tagout devices to energy isolating devices; and to otherwise disable machines or equipment to prevent unexpected energization, startup or release of stored energy, in order to prevent injury to employees.



8900



## NOTES

## RESOURCES

### UNIFIRST FIRST AID + SAFETY

3499 Rider Trail South, Earth City, MO 63045  
314.344.1100, 800.869.6970 Toll Free

### AMERICAN NATIONAL STANDARDS INSTITUTE (ANSI)

25 West 43rd Street, 4th Floor, New York, NY 10036  
212.642.4900, ANSI.org

### CDC NATIONAL AIDS HOTLINE CENTERS FOR DISEASE CONTROL AND PREVENTION

800.342.AIDS (2437), 800.344.SIDA, 800.AIDS.TTY

### MINE SAFETY AND HEALTH ADMINISTRATION (MSHA)

1100 Wilson Blvd, 21st Floor, Arlington, VA 22209  
202.693.9400, MSHA.gov

### NATIONAL INSTITUTE FOR OCCUPATIONAL SAFETY AND HEALTH (NIOSH)

1600 Clifton Road, Atlanta, GA 30333  
888.232.6348, CDC.gov/NIOSH

### OCCUPATIONAL SAFETY AND HEALTH ADMINISTRATION (OSHA)

200 Constitution Avenue, Washington, DC 20210  
800.321.6742 (24-hour hotline), OSHA.gov

### NATIONAL POISON CONTROL CENTER

800.222.1222

05/15/2023

## UniFirst First Aid + Safety + Training

Just-in-time service with a complete range of First Aid, Safety and Training products help you keep your employees safe and your facility compliant.



FIRST AID & SAFETY  
SUPPLIES & SERVICE



ONSITE & ONLINE  
SAFETY COURSES



ONSITE DELIVERY  
AND MAINTENANCE

---

## Trust UniFirst for image-enhancing workwear and facility services



14,000 EMPLOYEE  
TEAM PARTNERS



MORE THAN  
300,000  
CUSTOMERS



SERVICING HALF  
OF THE FORTUNE  
500 LIST

---

## UniFirst Triple-Pro Service Team

When you choose UniFirst, you get three dedicated service professionals working on your account at all times. This helps ensure that you consistently receive the quality products and services your business deserves, and that you always get quick resolutions to any concerns you may have.



**Route Service Representative** keeps your program running smoothly week in, week out



**Service Manager** ensures you're consistently getting everything you need, when you need it



**Customer Service Representative** stands ready to provide personalized assistance